

Cormainville (France)



Main data

Continent: Europe

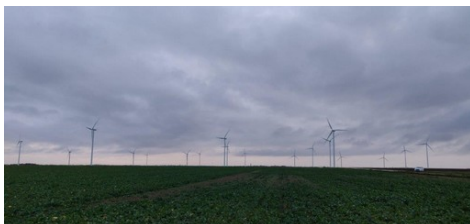
Country: France

Area: 28 (Centre-Val de Loire)

Onshore

Status: Operational

Total power: 77,500 kW



Details

Part 1

City: Guillonville, Cormainville

Commissioning: 2006/11

6 turbines

Manufacturer: Vestas

Turbine: V80/2000

Power: 12,000 kW

Status: Operational

Developer: Volkswind

Operator: H2air

Owner: Momentum

Location (WGS84):

- North: 48.11935

- East: 1.62735

Altitude: 132/138 m

Part 2

City: Guillonville, Cormainville

Commissioning: 2006/11

6 turbines

Manufacturer: Vestas

Turbine: V80/2000

Power: 12,000 kW

Status: Operational

Developer: Volkswind

Operator: Difko AS

Owner: Difko AS

Location (WGS84):

- North: 48.11935

- East: 1.62735

Altitude: 132/138 m

Part 3

City: Guillonville, Cormainville, Courbehaye

Commissioning: 2016/10

7 turbines

Manufacturer: Nordex

Turbine: N100/2500

Power: 17,500 kW

Status: Operational

Developer: Iqony/VSB Group

Operator: Difko AS

Owner: Difko AS

Location (WGS84):

- North: 48.13375

- East: 1.63881

Additional parts: https://www.thewindpower.net/windfarm_en_25036.php