

Erie Shores (Canada)



Main data

Continent: North America

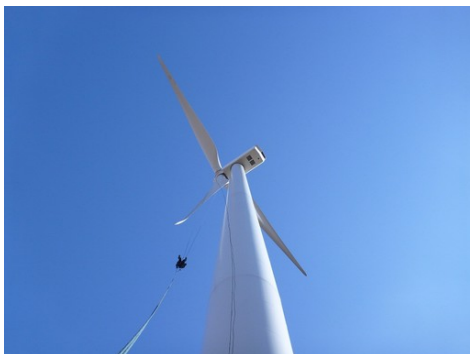
Country: Canada

Area: Ontario

Onshore

Status: Operational

Total power: 99,000 kW



Details

Commissioning: 2006/05

66 turbines

Manufacturer: GE Energy

Turbine: 1.5sle

Developer: International Power

Operator: Capstone Infrastructure

Owner: Capstone Infrastructure

Location (WGS84):

- North: 42.67085

- West: 80.85188